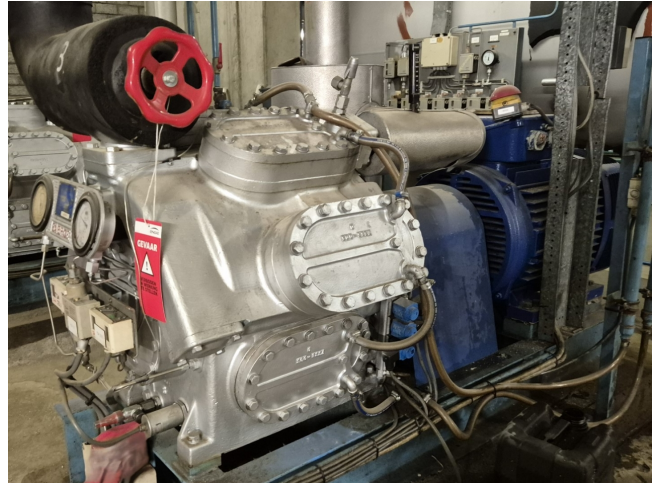


# Sabroe SMC 108L

## Specifications

Бренд	Sabroe
Тип	SMC 108L
Хладагент	NH 3 (ammonia)
кВт at +10°C/+40°C	724,8
kW at 0°C/+40°C	479,4
kW at -5°C/+40°C	381,5
кВт at -10°C/+40°C	298,1
Разгруженный старт	✓
Управление	✓
производительностью	
На стальной раме	✓
Прессостаты	✓
Манометры	✓
Маслоотделитель	✓
Смотровое стекло	✓
Соленоидный клапан	✓
Примечания	Y.o.b. 1986
Примечания	*Capacity based on R717 (Ammonia).
Размеры	2200x1000x1700 mm (LxWxH)
Stock	1



## Description

### Used Sabroe SMC 108L

Used Sabroe SMC 108L reciprocating compressor on NH3 (Ammonia). Complete with a Leroy Somer P 280 S-4 electric motor - 50 Hz - 110 kW - 1460 RPM, oil separator with a volume of 65 liters, pressure and safety switches/gauges and a sight glass. \*Why choose for HOSBV? We are not only the largest used refrigeration specialist in Europe, but also, we deliver all equipment including an extensive test, warranty and an industrial cleaning. \*Optionally we can also perform a new paint job and arrange the logistics.

